

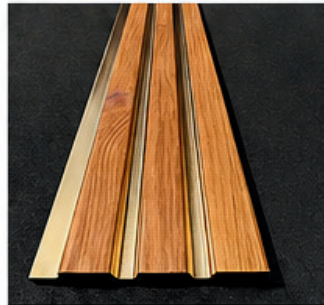
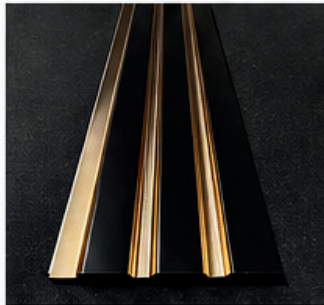
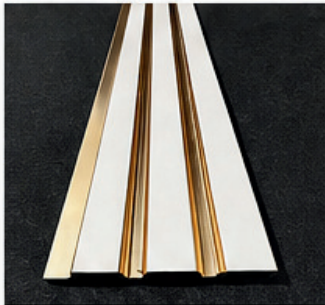
MARLETTA

DECORATIVE PANELS



POLYMER PANELING

Modern Design. Superior Performance.



LÍNEA GOLD

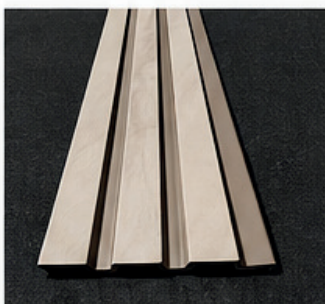
Offering both aesthetics and durability, polymer paneling provides superior resistance to water, moisture, and impact. It's the essential cladding solution for modern decoration!

AURUM BLACK

Offering both aesthetics and durability, polymer paneling provides superior resistance to water, moisture, and impact. It's the essential cladding solution for modern decoration!

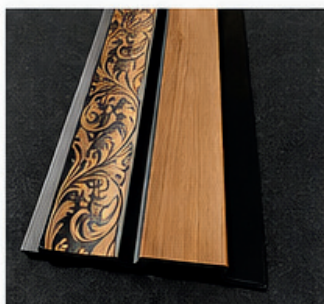
GOLDEN WOOD

Offering both aesthetics and durability, polymer paneling provides superior resistance to water, moisture, and impact. It's the essential cladding solution for modern decoration!



TERRA LUX

Offering both aesthetics and durability, polymer paneling provides superior resistance to water, moisture, and impact. It's the essential cladding solution for modern decoration!



VÍNTAGE LUXE

Offering both aesthetics and durability, polymer paneling provides superior resistance to water, moisture, and impact. It's the essential cladding solution for modern decoration!



LÍNEA PLATINUM

Offering both aesthetics and durability, polymer paneling provides superior resistance to water, moisture, and impact. It's the essential cladding solution for modern decoration!

TECHNICAL SPECIFICATIONS

	MATERIAL High quality polymer (WPC)
	HEIGHT 2900 mm
	WIDTH 160 mm
	THICKNESS 24 mm
	INSTALLATION Wall mounted
	MOISTURE RESISTANCE High
	UV RESISTANCE High
	COLORS & FINISHES Multiple finishes available
	MAINTENANCE Low maintenance

DESCRIPTION

Polymer paneling combines the natural beauty of wood with the advanced performance of modern materials.

Designed to enhance any interior, it offers a stylish, durable and low maintenance solution for walls.

Ideal for residential, commercial and hospitality spaces.

KEY BENEFITS

- ✓ Modern and elegant design
- ✓ Water and moisture resistant
- ✓ High impact and scratch resistance
- ✓ Easy and fast installation
- ✓ Low maintenance
- ✓ Eco-friendly material
- ✓ Long lasting performance

POLYMER PANELING

Modern Design. Superior Performance.



BERGAMA

202-03

Offering both aesthetics and durability, polymer paneling provides superior resistance to water, moisture, and impact. It's the essential cladding solution for modern decoration!



MASIF

202-11

Offering both aesthetics and durability, polymer paneling provides superior resistance to water, moisture, and impact. It's the essential cladding solution for modern decoration!



CENEVİZ

202-02

Offering both aesthetics and durability, polymer paneling provides superior resistance to water, moisture, and impact. It's the essential cladding solution for modern decoration!



VOGUE

202-07

Offering both aesthetics and durability, polymer paneling provides superior resistance to water, moisture, and impact. It's the essential cladding solution for modern decoration!



KIRLANGIÇ

202-04

Offering both aesthetics and durability, polymer paneling provides superior resistance to water, moisture, and impact. It's the essential cladding solution for modern decoration!



OZMOZ

202-10

Offering both aesthetics and durability, polymer paneling provides superior resistance to water, moisture, and impact. It's the essential cladding solution for modern decoration!

TECHNICAL SPECIFICATIONS

	MATERIAL High quality polymer (WPC)
	HEIGHT 2900 mm
	WIDTH 160 mm
	THICKNESS 24 mm
	INSTALLATION Wall mounted
	MOISTURE RESISTANCE High
	UV RESISTANCE High
	COLORS & FINISHES Multiple finishes available
	MAINTENANCE Low maintenance

DESCRIPTION

Polymer paneling combines the natural beauty of wood with the advanced performance of modern materials.

Designed to enhance any interior, it offers a stylish, durable and low maintenance solution for walls.

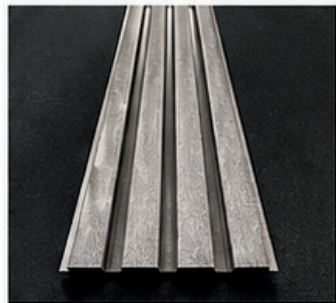
Ideal for residential, commercial and hospitality spaces.

KEY BENEFITS

- ✓ Modern and elegant design
- ✓ Water and moisture resistant
- ✓ High impact and scratch resistance
- ✓ Easy and fast installation
- ✓ Low maintenance
- ✓ Eco-friendly material
- ✓ Long lasting performance

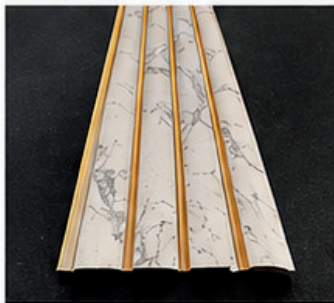
POLYMER PANELING

Modern Design. Superior Performance.



DUBAI GREY

Offering both aesthetics and durability, polymer paneling provides superior resistance to water, moisture, and impact. It's the essential cladding solution for modern decoration!



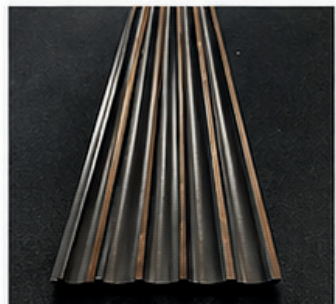
DUBAI SPECIAL

Offering both aesthetics and durability, polymer paneling provides superior resistance to water, moisture, and impact. It's the essential cladding solution for modern decoration!



DUBAI PINE

Offering both aesthetics and durability, polymer paneling provides superior resistance to water, moisture, and impact. It's the essential cladding solution for modern decoration!



DUBAI GREY

Offering both aesthetics and durability, polymer paneling provides superior resistance to water, moisture, and impact. It's the essential cladding solution for modern decoration!



DUBAI SPECIAL

Offering both aesthetics and durability, polymer paneling provides superior resistance to water, moisture, and impact. It's the essential cladding solution for modern decoration!



DUBAI PINE

Offering both aesthetics and durability, polymer paneling provides superior resistance to water, moisture, and impact. It's the essential cladding solution for modern decoration!

TECHNICAL SPECIFICATIONS

	MATERIAL High quality polymer (WPC)
	HEIGHT 2900 mm
	WIDTH 160 mm
	THICKNESS 24 mm
	INSTALLATION Wall mounted
	MOISTURE RESISTANCE High
	UV RESISTANCE High
	COLORS & FINISHES Multiple finishes available
	MAINTENANCE Low maintenance

DESCRIPTION

Polymer paneling combines the natural beauty of wood with the advanced performance of modern materials.

Designed to enhance any interior, it offers a stylish, durable and low maintenance solution for walls.

Ideal for residential, commercial and hospitality spaces.

KEY BENEFITS

- ✓ Modern and elegant design
- ✓ Water and moisture resistant
- ✓ High impact and scratch resistance
- ✓ Easy and fast installation
- ✓ Low maintenance
- ✓ Eco-friendly material
- ✓ Long lasting performance

POLYMER PANELING

Modern Design. Superior Performance.



KIRAZ
101-03

Offering both aesthetics and durability, polymer paneling provides superior resistance to water, moisture, and impact. It's the essential cladding solution for modern decoration!



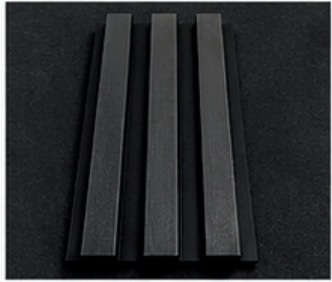
GUSTO
101-11

Offering both aesthetics and durability, polymer paneling provides superior resistance to water, moisture, and impact. It's the essential cladding solution for modern decoration!



YABAN CEVİZ
101-02

Offering both aesthetics and durability, polymer paneling provides superior resistance to water, moisture, and impact. It's the essential cladding solution for modern decoration!



PRALINE
101-07

Offering both aesthetics and durability, polymer paneling provides superior resistance to water, moisture, and impact. It's the essential cladding solution for modern decoration!



AKÇA
101-04

Offering both aesthetics and durability, polymer paneling provides superior resistance to water, moisture, and impact. It's the essential cladding solution for modern decoration!



KRİSTAL
101-10

Offering both aesthetics and durability, polymer paneling provides superior resistance to water, moisture, and impact. It's the essential cladding solution for modern decoration!

TECHNICAL SPECIFICATIONS

	MATERIAL High quality polymer (WPC)
	HEIGHT 2900 mm
	WIDTH 160 mm
	THICKNESS 24 mm
	INSTALLATION Wall mounted
	MOISTURE RESISTANCE High
	UV RESISTANCE High
	COLORS & FINISHES Multiple finishes available
	MAINTENANCE Low maintenance

DESCRIPTION

Polymer paneling combines the natural beauty of wood with the advanced performance of modern materials.

Designed to enhance any interior, it offers a stylish, durable and low maintenance solution for walls.

Ideal for residential, commercial and hospitality spaces.

KEY BENEFITS

- ✓ Modern and elegant design
- ✓ Water and moisture resistant
- ✓ High impact and scratch resistance
- ✓ Easy and fast installation
- ✓ Low maintenance
- ✓ Eco-friendly material
- ✓ Long lasting performance

PVC MARBLE

Models



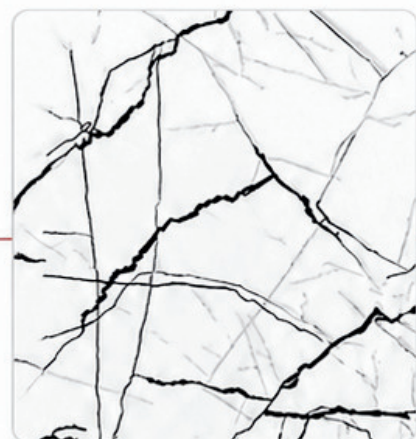
Platin Gold

PVC marble slabs are water-resistant, lightweight, easy-to-install decorative cladding panels that look like real marble. Durable, economical, and aesthetically pleasing, they offer a long-lasting solution for indoor spaces.



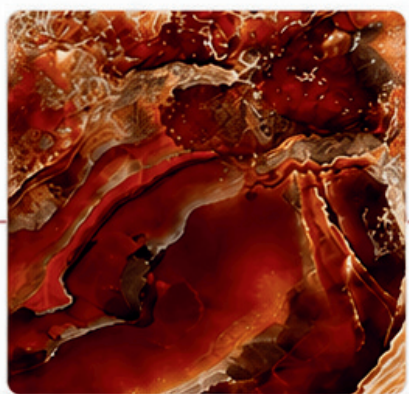
Onxy Green

PVC marble slabs are water-resistant, lightweight, easy-to-install decorative cladding panels that look like real marble. Durable, economical, and aesthetically pleasing, they offer a long-lasting solution for indoor spaces.



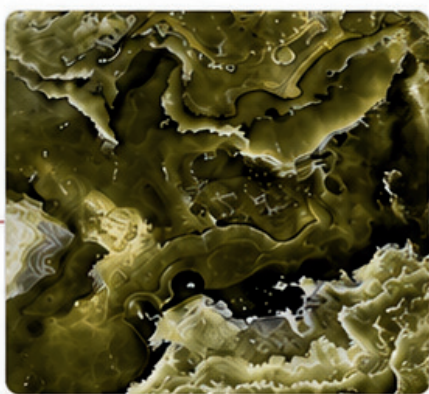
White Black

PVC marble slabs are water-resistant, lightweight, easy-to-install decorative cladding panels that look like real marble. Durable, economical, and aesthetically pleasing, they offer a long-lasting solution for indoor spaces.



Volcano

PVC marble slabs are water-resistant, lightweight, easy-to-install decorative cladding panels that look like real marble. Durable, economical, and aesthetically pleasing, they offer a long-lasting solution for indoor spaces.



Green Volcano

PVC marble slabs are water-resistant, lightweight, easy-to-install decorative cladding panels that look like real marble. Durable, economical, and aesthetically pleasing, they offer a long-lasting solution for indoor spaces.



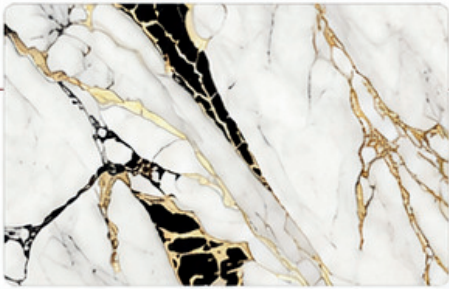
Green Onxy

PVC marble slabs are water-resistant, lightweight, easy-to-install decorative cladding panels that look like real marble. Durable, economical, and aesthetically pleasing, they offer a long-lasting solution for indoor spaces.



PVC MARBLE

Models



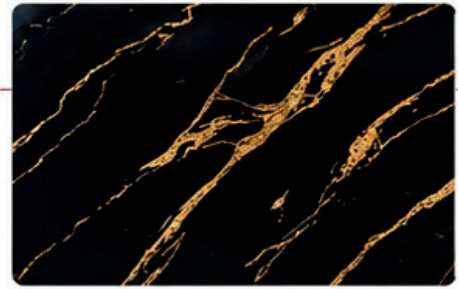
Golden Strike

PVC marble slabs are water-resistant, lightweight, easy-to-install decorative cladding panels that look like real marble. Durable, economical, and aesthetically pleasing, they offer a long-lasting solution for indoor spaces.



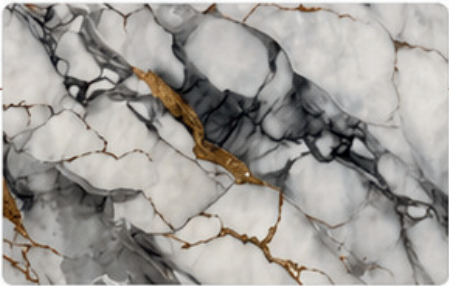
Gray Gold

PVC marble slabs are water-resistant, lightweight, easy-to-install decorative cladding panels that look like real marble. Durable, economical, and aesthetically pleasing, they offer a long-lasting solution for indoor spaces.



Black Gold

PVC marble slabs are water-resistant, lightweight, easy-to-install decorative cladding panels that look like real marble. Durable, economical, and aesthetically pleasing, they offer a long-lasting solution for indoor spaces.



Storm

PVC marble slabs are water-resistant, lightweight, easy-to-install decorative cladding panels that look like real marble. Durable, economical, and aesthetically pleasing, they offer a long-lasting solution for indoor spaces.



Toprak Damar

PVC marble slabs are water-resistant, lightweight, easy-to-install decorative cladding panels that look like real marble. Durable, economical, and aesthetically pleasing, they offer a long-lasting solution for indoor spaces.



Gold Damar

PVC marble slabs are water-resistant, lightweight, easy-to-install decorative cladding panels that look like real marble. Durable, economical, and aesthetically pleasing, they offer a long-lasting solution for indoor spaces.

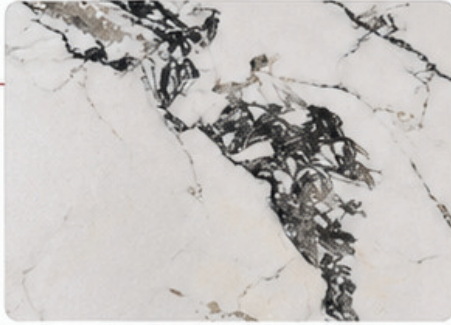
PVC MARBLE

Models



Saman

PVC marble slabs are water-resistant, lightweight, easy-to-install decorative cladding panels that look like real marble. Durable, economical, and aesthetically pleasing, they offer a long-lasting solution for indoor spaces.



Bej Damar

PVC marble slabs are water-resistant, lightweight, easy-to-install decorative cladding panels that look like real marble. Durable, economical, and aesthetically pleasing, they offer a long-lasting solution for indoor spaces.



Titanyum Taş

PVC marble slabs are water-resistant, lightweight, easy-to-install decorative cladding panels that look like real marble. Durable, economical, and aesthetically pleasing, they offer a long-lasting solution for indoor spaces.



Madam Gold

PVC marble slabs are water-resistant, lightweight, easy-to-install decorative cladding panels that look like real marble. Durable, economical, and aesthetically pleasing, they offer a long-lasting solution for indoor spaces.



Altın Bulut

PVC marble slabs are water-resistant, lightweight, easy-to-install decorative cladding panels that look like real marble. Durable, economical, and aesthetically pleasing, they offer a long-lasting solution for indoor spaces.



Ice Berg Grey

PVC marble slabs are water-resistant, lightweight, easy-to-install decorative cladding panels that look like real marble. Durable, economical, and aesthetically pleasing, they offer a long-lasting solution for indoor spaces.

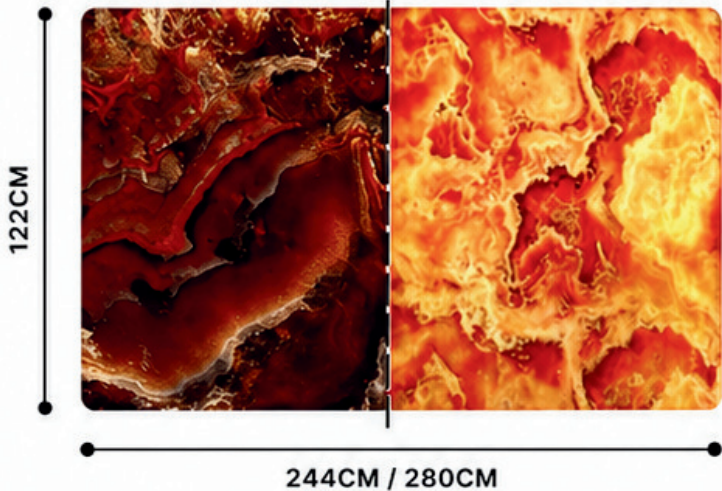
LIGHT TRANSMITTING PLATES

Mold and color options

VOLCANO

APHOTIC


LIGHTED-UP 

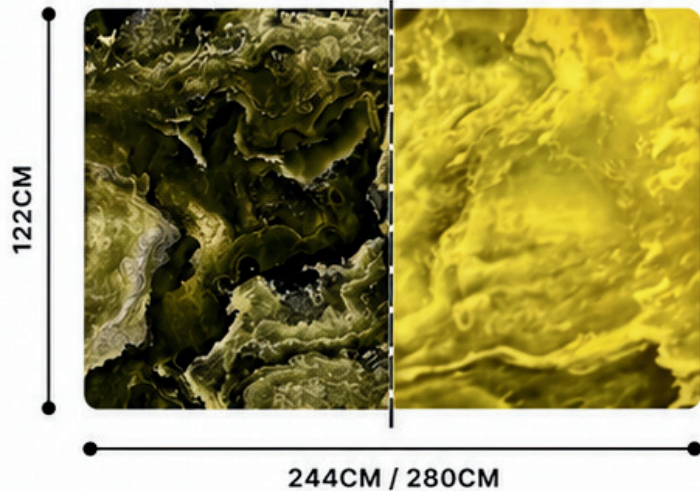


244CM / 280CM

GREEN VOLCANO

APHOTIC

LIGHTED-UP 

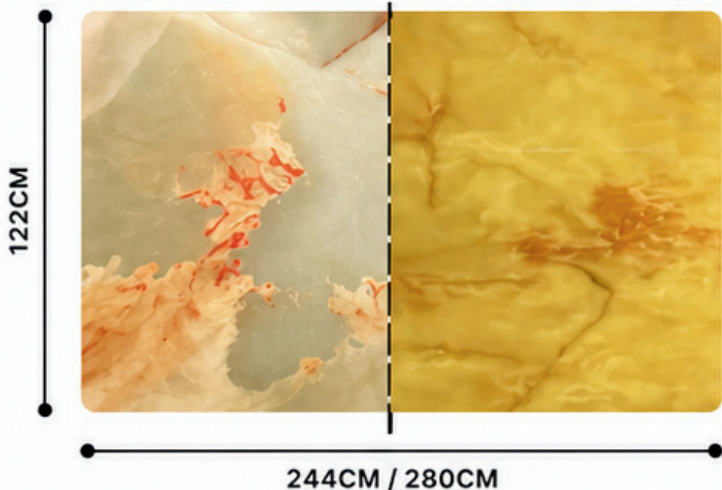


244CM / 280CM

ONYX ROYAL

APHOTIC

LIGHTED-UP 

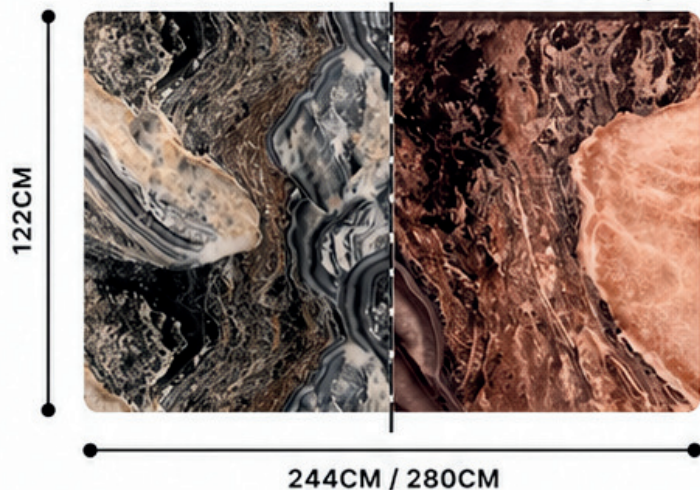


244CM / 280CM

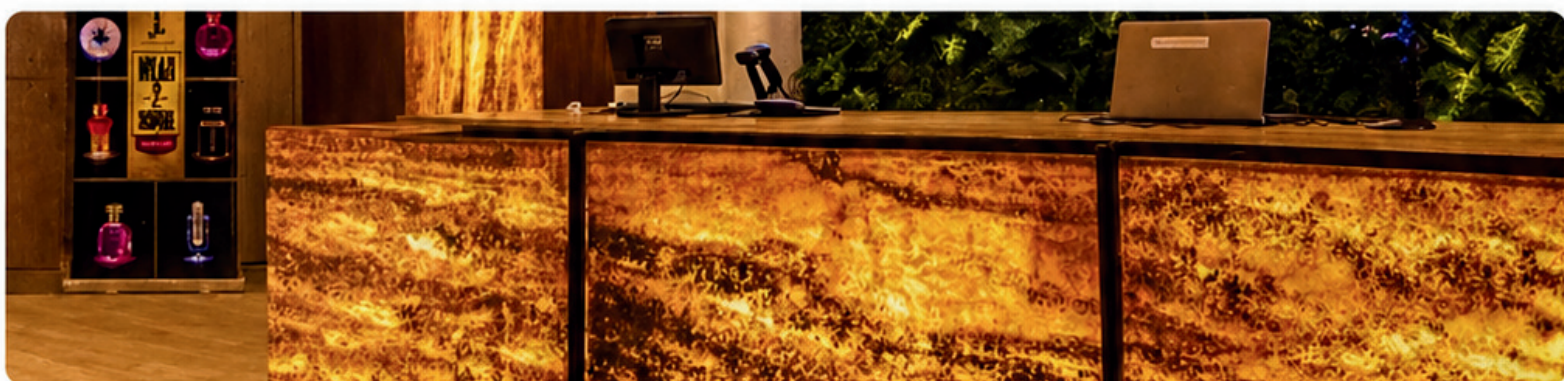
ONYX GREEN

APHOTIC

LIGHTED-UP 



244CM / 280CM





KAPADOKYA



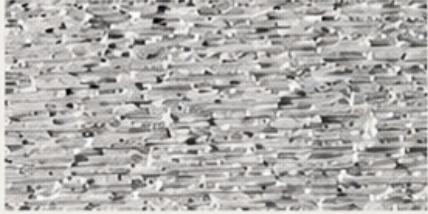
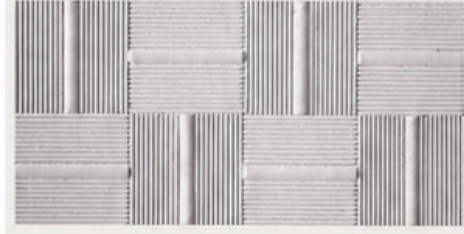
NİLÜFER



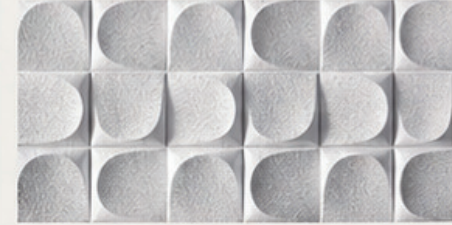
KÖRFEZ



dp DECO POLI



RIVER



OPAL



KAPADOKYA



dp DECO POLI

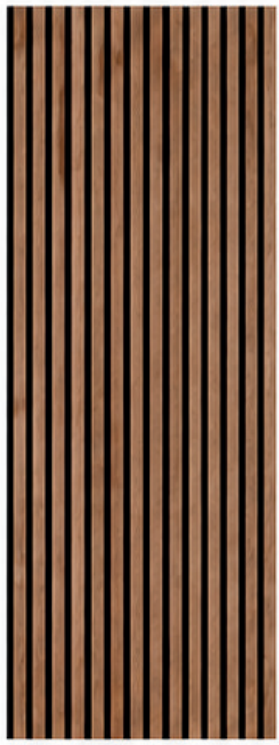


dp DECO POLI



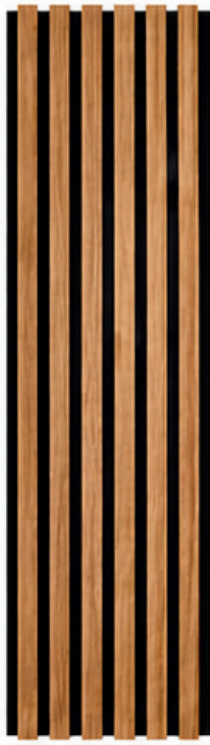
AKUSTİK

WITH COLOR AND PATTERN OPTIONS...



100CM

280CM



60CM

280CM



280CM



LIGHT OAK

Acoustic panels are decorative panels with felt base and aesthetically pleasing MDF surface.



ANTHRACITE

Acoustic panels are decorative panels with felt base and aesthetically pleasing MDF surface.



RED OAK

Acoustic panels are decorative panels with felt base and aesthetically pleasing MDF surface.

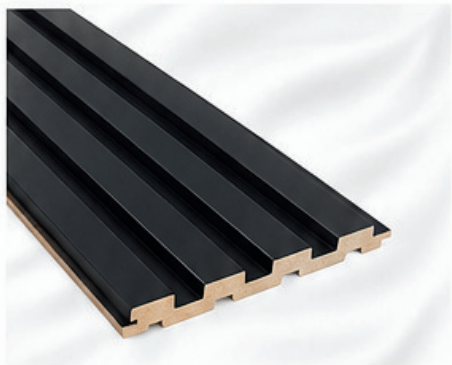


GRAY ANTHRACITE

Acoustic panels are decorative panels with felt base and aesthetically pleasing MDF surface.

MDF WALL PANEL

With color options



ANTHRACITE

MDF wall panel with decorative surface and modern design.



SUNSET

MDF wall panel with decorative surface and modern design.



PINE

MDF wall panel with decorative surface and modern design.



SOFT SATIN

MDF wall panel with decorative surface and modern design.



WHITE

MDF wall panel with decorative surface and modern design.



GRAY ANTHRACITE

MDF wall panel with decorative surface and modern design.

POLIDECK

MOLD AND COLOR OPTIONS



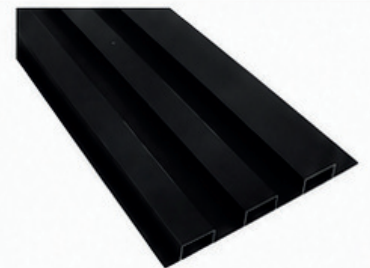
DP-01

20 cm Glossy Fantastic Panel
20 x 13 x 280 cm



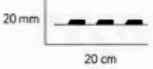
DP-03

20 cm Glossy Fantastic Patterned Panel
20 x 13 x 280 cm



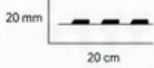
DP-05

20 cm Black Matte Stripe Panel
20 x 13 x 290 cm



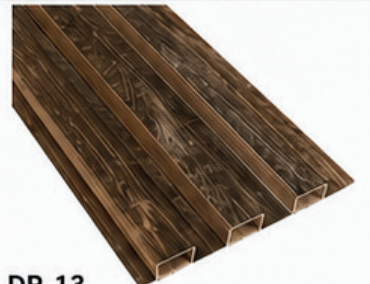
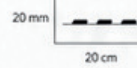
DP-06

20 cm Matte Oak Panel
20 x 13 x 280 cm



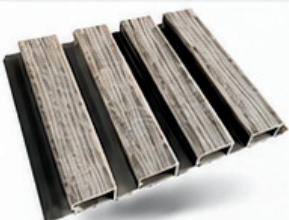
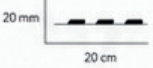
DP-09

20 cm Matte Walnut Panel
20 x 13 x 280 cm



DP-13

20 cm Glossy Cedar Panel
20 x 13 x 280 cm



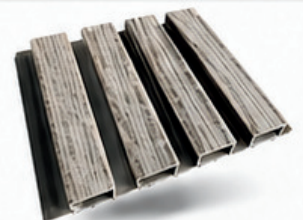
DP-038-13

20 cm Gray Wood Panel
20 x 13 x 280 cm



DP-038-12

20 cm Light Oak Panel
20 x 13 x 280 cm



DP-038-13

20 cm Gray Wood Panel
20 x 13 x 280 cm



WATER RESISTANT

Resistant to water, moisture and humidity.



LIGHTWEIGHT

Lightweight panels for easy handling and installation.



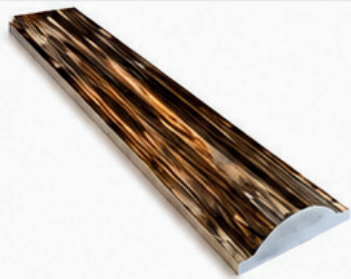
EASY INSTALLATION

Quick and practical installation with modern systems.

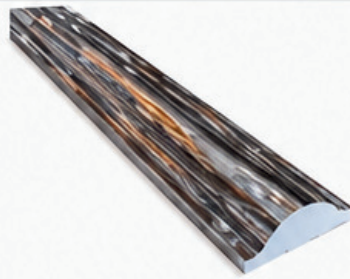
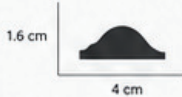


COLOR & PATTERN OPTIONS

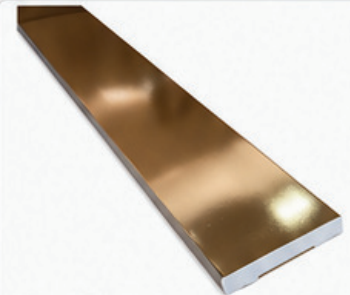
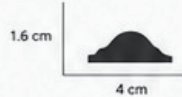
A wide range of colors and patterns to suit every style.



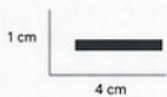
DP-310-126
4 cm Gold Lath
4 x 240 x 1.6 cm



DP-310-127
4 cm Molding Lath
4 x 240 x 1.6 cm



DP-310-120
4 cm Gold Flat Lath
4 x 240 x 1 cm



DP-310-126

Polymer lath is an aesthetically pleasing cladding profile made from durable polymer material and used in wall and ceiling decoration. It is resistant to moisture, impact, and sunlight. It is paintable, lightweight, and easy to install. It provides a stylish and long-lasting finish for both interior and exterior spaces.

DP-310-127

Polymer lath is an aesthetically pleasing cladding profile made from durable polymer material and used in wall and ceiling decoration. It is resistant to moisture, impact, and sunlight. It is paintable, lightweight, and easy to install. It provides a stylish and long-lasting finish for both interior and exterior spaces.

DP-310-120

Polymer lath is an aesthetically pleasing cladding profile made from durable polymer material and used in wall and ceiling decoration. It is resistant to moisture, impact, and sunlight. It is paintable, lightweight, and easy to install. It provides a stylish and long-lasting finish for both interior and exterior spaces.



DP-3110
6 x 6 x 240 cm



DP-3110

Polymer lath is an aesthetically pleasing cladding profile made from durable polymer material and used in wall and ceiling decoration. It is resistant to moisture, impact, and sunlight. It is paintable, lightweight, and easy to install. It provides a stylish and long-lasting finish for both interior and exterior spaces.



DP-4010
10 x 1.8 x 240 cm



DP-4010

Polymer lath is an aesthetically pleasing cladding profile made from durable polymer material and used in wall and ceiling decoration. It is resistant to moisture, impact, and sunlight. It is paintable, lightweight, and easy to install. It provides a stylish and long-lasting finish for both interior and exterior spaces.



DP-2512
2.5 x 1.2 x 240 cm



DP-2512

Polymer lath is an aesthetically pleasing cladding profile made from durable polymer material and used in wall and ceiling decoration. It is resistant to moisture, impact, and sunlight. It is paintable, lightweight, and easy to install. It provides a stylish and long-lasting finish for both interior and exterior spaces.

BASEBOARD



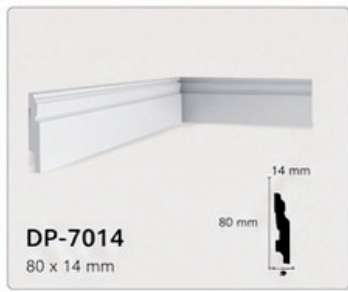
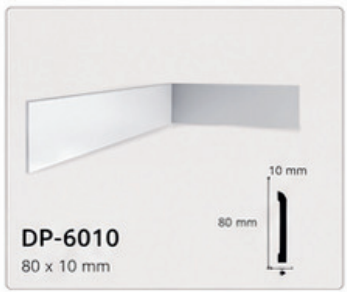
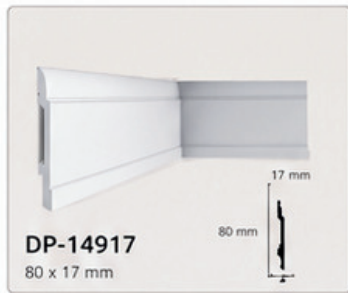
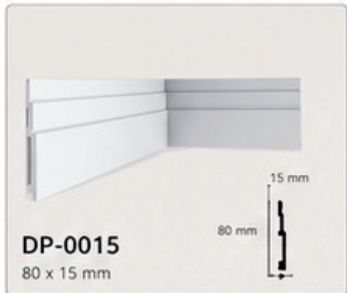
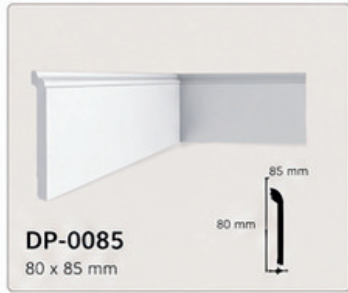
WATERPROOF



IMPACT RESISTANT



LONG LASTING



MOTIFS



STAR

18x5 cm (Suitable for)
16x4 2.5 cm



ARCH

22x5 cm (Suitable for)
17x4 2.5 cm



ELEGANCE

15x6 4 cm (Suitable for)
9x4 2.5 cm



PAGODA

18x5 4 cm (Suitable for)
15x4 2.5 cm



PRINCESS

18x5 4 cm (Suitable for)
15x4 2.5 cm



STARLIGHT

23x5 4 cm (Suitable for)
14x3 2.5 cm



LEAF

68x26 cm



NIGHT OWL

30x53 cm



CROWN

56x32 cm



QUATREFOIL

40x40 cm



SAH

78x37 cm



LARGE MEDALLION

90x170 cm



GARLAND

62x20 cm



SARMASIK

89x34 cm



SARMANLI

62x62 cm



ROSETTE

60x60 cm



OVAL

48x31 cm



CEILING PANEL

60x40 cm



CONTACT US



MARLETTA Ltd.



marlettaltd@gmail.com

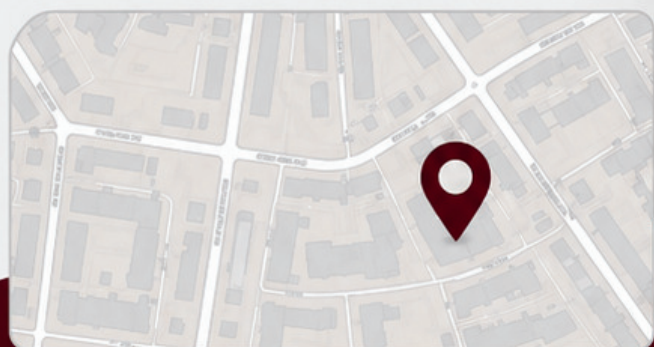


0887083275

OUR LOCATION



Sofia, Bulgaria



WATERPROOF



IMPACT RESISTANT



LONG LASTING



PREMIUM QUALITY

